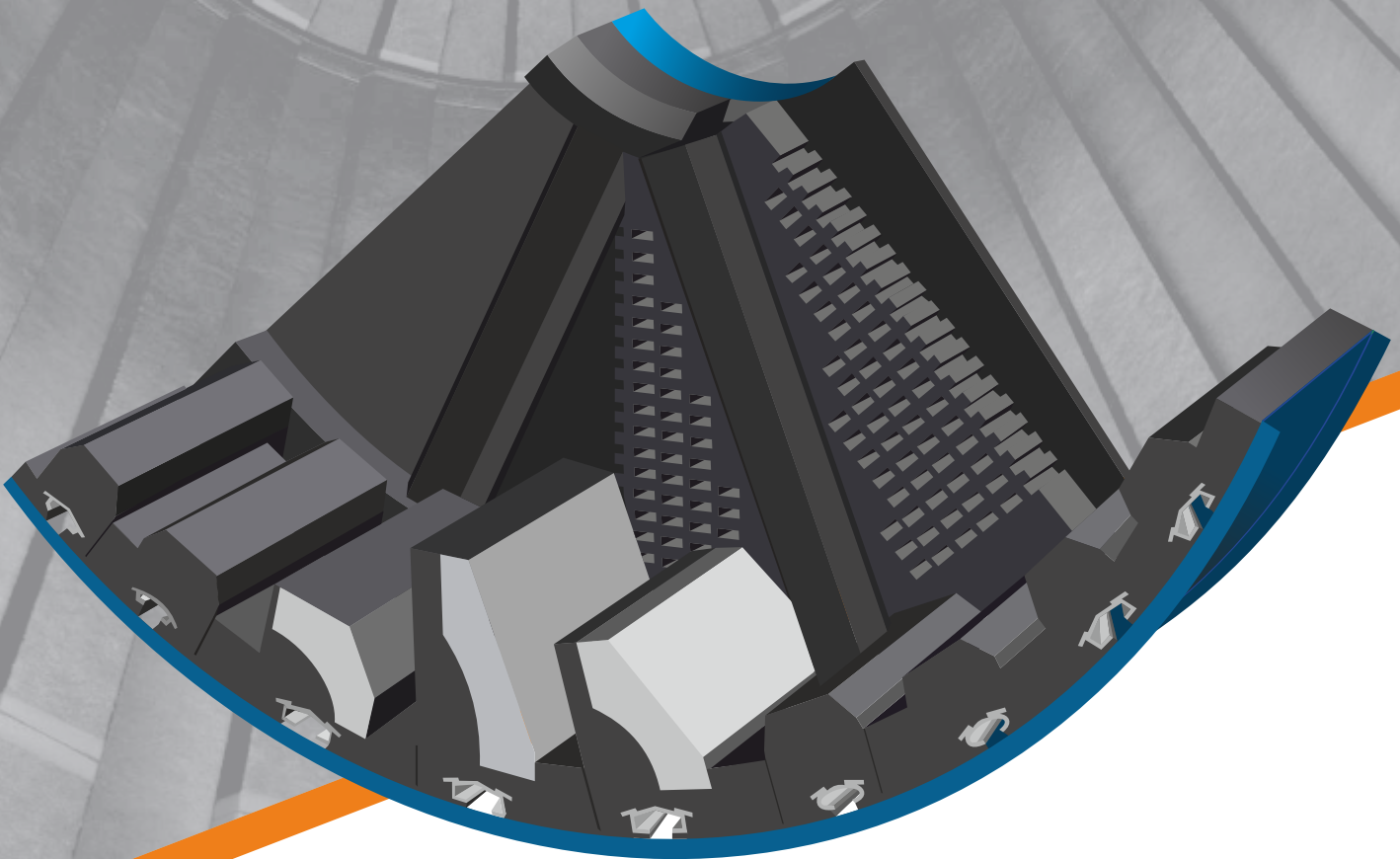
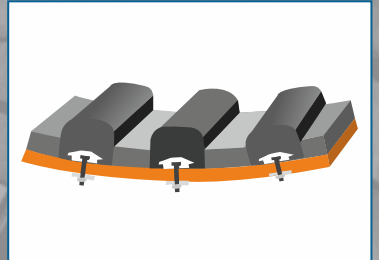
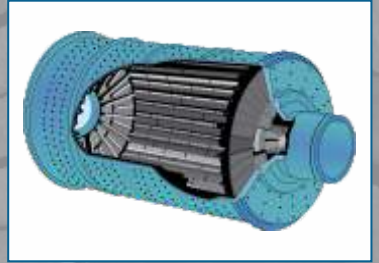


QUALITY NEVER SAYS SORRY !!



Mouldtech is one of best-in-class manufacturer of rubber products for mining, mineral processing, bulk material handling and ceramic industries. Mouldtech products are made of tough abrasion resistant rubber with guaranteeing their ability to give maximum efficiency in grinding & reduction in power.

**MOULDTECH
INDUSTRIES**
For Quality, Reliability, Economy And Prompt Delivery
MFG. OF RUBBER & CORK PRODUCTS

An ISO 9001:2015 Company

www.mouldtechindustries.in

RUBBER MILL LINING

Mouldtech is a prominent manufacturer of Rubber Mill Liner. Customization is our strong suit, which has enabled us to serve practically all industrial sectors, including power, steel, mining, ceramics tiles, and other engineering industries. All mill lining is a well-designed arrangement comprising various elements including as

Shell Plate Rubber Liners : Shell plate rubber liners are primarily used to protect mill shells against direct ball impact. Rubber Liners are fully sealed to minimize slurry leakage and shell corrosion. It's also available as a wave liner as well as a combo liner.

Rubber Lifter Bar : A vital component of a grinding mill is the lifter bar. The lifter bar acts as a liner to shield the ball mill head from direct impact and friction from the grinding media and material. Mill Lifter Liners of this type are extensively utilized in all types of working conditions to boost grinding efficiency and productivity while reducing metal consumption.

Mouldtech adopts MillTraj design software, which enables for the quick and reliable modelling of outer charge trajectories in rotary mills, which is critical for the right design of liner profiles.

Head End Liner : This is an important part of conical ball mill and it's call "Feed end liner" or "Discharge end Line" for ball mill. Its main function is to protect the end cover of ball mill.



Application :

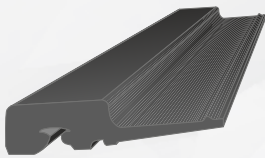
- ☒ Secondary/Regrind Mill.
- ☒ Washing Drum/Scrubbers.

Each mill liner is specifically developed for the duty situation.

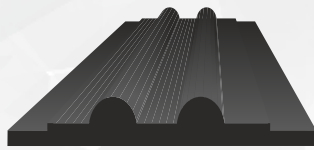
Product Range	Maximum Size	
Lifter Bar (Symetric & Asymetric)	Length	2200 mm
	Width	300 mm
	Height	400 mm
Shell Plates (Symetric & Asymetric)	Length	2200 mm
	Width	500 mm
	Height	160 mm

Note : Other lengths are available on request.

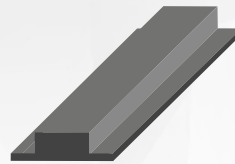
MILL LINING PRODUCTS



COMBO LINER



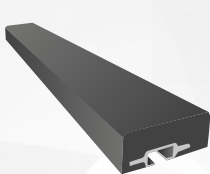
ITALIC LINER



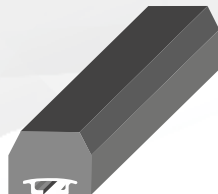
SHELL LINER



WAVE LINER



LIFTER BAR



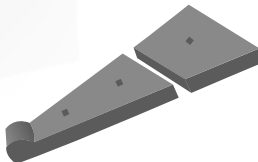
LIFTER BAR



PULP LIFTER



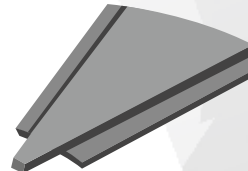
FILLING SEGMENT



HEAD END LINER



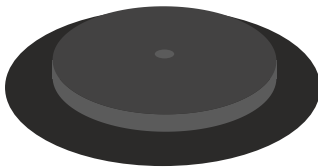
GRATE PLATE



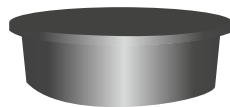
HEAD END LINER



DISCHARGE CONE



SIDE WALL CIRCLE



RUBBER PLUG



RUBBER FRAME



FITTING ACCESSORIES

OUR OTHER PRODUCTS



CERAMIC LAGGING SHEET



DIAMOND GROOVE SHEET



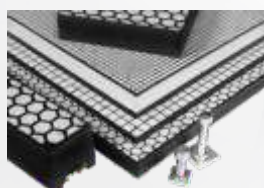
IMPACT BAR



PRIMARY/SECONDARY
BELT CLEANER



CERAMIC LAGGED PULLEY



CERAMIC WEAR LINERS



RUBBER WEAR LINER

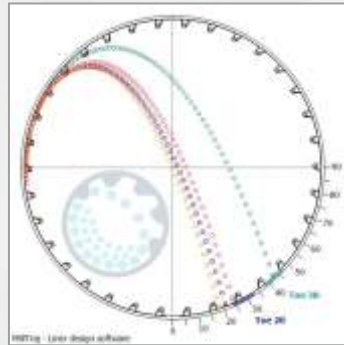


SKIRT RUBBER

Mill Liner Design

Poor liner design has a detrimental effect on milling performance and on liner life this results in a loss of revenue and increased operational costs. Poor milling performance can result in excess power usage and decreased recovery of the valuable minerals. Excess liner wear results in exorbitant liner materials costs, and excessive downtime which reduces mill availability and impacts on plant throughput. Optimised liner design can be used to strike the best economic balance between liner life and mill grinding performance, for this reason Mouldtech uses computer simulation to provide optimum liner configuration that extends liner and increases Mill productivity.

MILLTRAJ SOFTWARE



Liner Design Services

Date:

17 December 2013

Telephone No.:

07 3720 2989

Email:

admin@mouldtech.com

Client Data

Customer Name:

Client

Mill Type:

SAG

Mill Data

Mill Diameter:

10.000m

Mill Length:

6.002m

No. of Rows:

24

Mill Fillings:

20%, 30%

Media Diameter:

125mm

Liner Specification

Units: mm & % crt, Angle from face

	Width	Height	Lift	Front Angle	Rear Angle	HSA	CR	Speed	Plate
250	250	250	30	0	0	2.91	3.10	68.0	100
250	250	250	25	0	0	2.86	3.77	74.0	100
250	150	150	25	0	0	4.72	3.77	74.0	100
250	250	250	30	0	0	2.91	3.10	68.0	100
250	175	175	30	0	0	4.03	3.10	68.0	100

Advantages of Mouldtech Mill Liners

- **Customized to Suit** : Customized and perfectly fitted, MOULDTECH's Rubber Liners are made to increase your profits.
- **Longer Wear life** : Rubber Liners from MOULDTECH are pressure molded to achieve the greatest density and are designed for the best level of abrasion resistance. Industry recognized as delivering 1.5-4 times the wear life of metal liners.
- **Reduced Weight Lower Costs** : MOULDTECH's Rubber Liners increase the ball mill's energy efficiency by 15% and are 75 to 80% lighter than steel liners. less strain on the mill means less upkeep.
- **Easy to Install** : Lightweight liners are installed quickly and easily, reducing downtime and increasing safety.
- **Strong Corrosion Resistance** : The pulp in the wet grinding process more readily corrodes the ball mills. However, under a certain temperature range of 90 C to 100 C, MOULDTECH'S rubber liners can effectively withstand the corrosion of acid and alkali materials, water, or other solutions.
- **Leak Proof** : Rubber liners are fully sealed to take away any chance of slurry leakage and shell degradation.
- **Reduce Noise Levels** : Favourable to the environment for safer working conditions by reducing 8 – 10 dB noise level.
- **Easy Inventory Control** : Rubber Liners' predictable wear life makes it possible to order and schedule supply in advance, thus reducing costs.



Factory (Exterior)

Mouldtech Industries is performing since 2007 with technical supports of

Dr. Ishit Thakore *M.Sc., Ph.D.*
Proprietor (specialised in polymers and rubbers)

Mr. Jayesh Shah *B.E., Mechanical*
CEO

Dr. Sonal Thakore *M.Sc., Ph.D.*
Technical Adviser (Specialised in Polyurethane & Nano Technology)

Mr. Manoj Thakore *B.E., Mechanical*
Engineering Advisor (Retired DGM, GSFC)



An ISO 9001:2015 Company

Nayakpura Estate, Opp. New Timber Market,
Nr. Soma Talav Chokdi, Pratapnagar-Dabhoi Road,
Vadodra - 390 025. Gujarat, INDIA.

E-mail: mouldtechindia@gmail.com / sales.mouldtech@gmail.com

URL: www.mouldtechindustries.in



Mob.: +91 6355754727, 9427444465, 9998003813, 7600030602